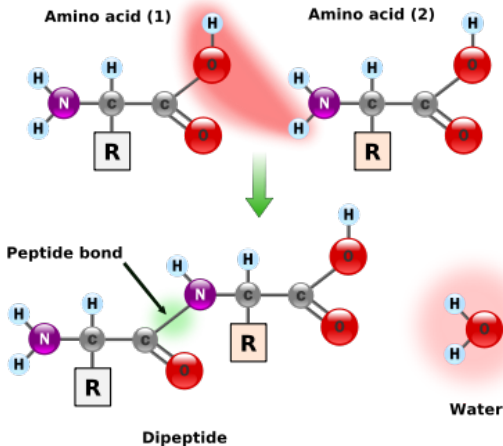


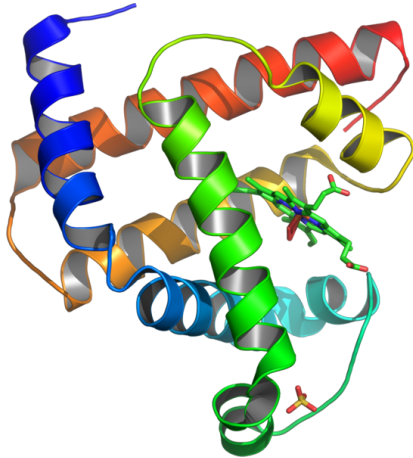
Secondary structures of proteins

Proteins — linear polymers (peptide chains) folded in compact globules



Secondary structures — standard conformations of peptide chains

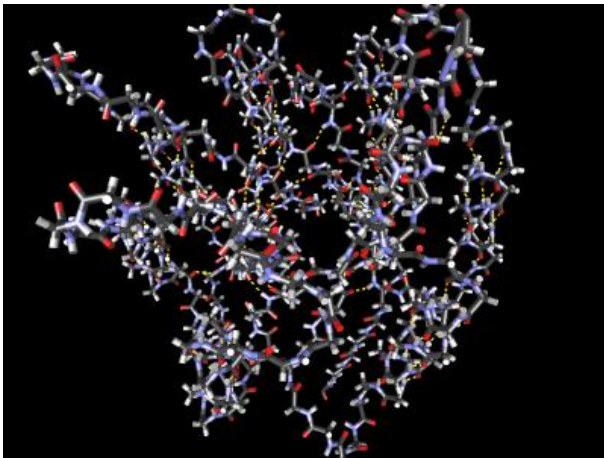
Myoglobin (α -helices)



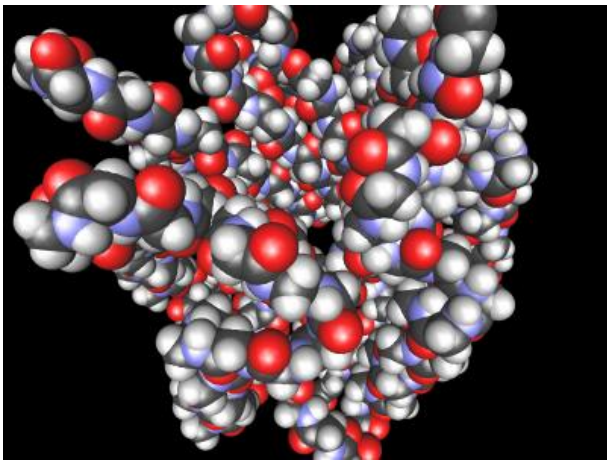
α -helices and β -chains



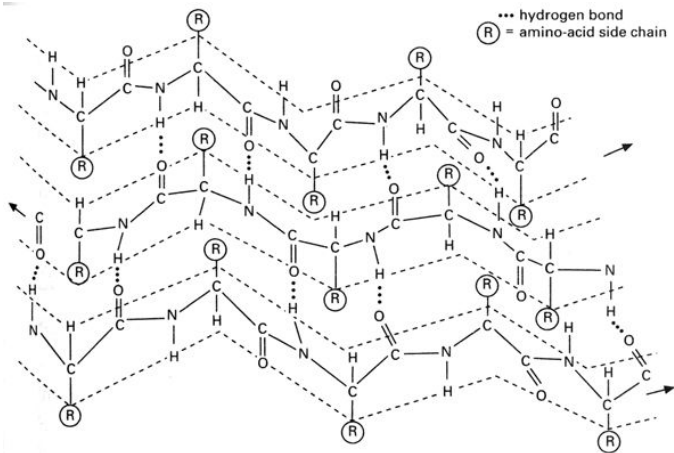
The same protein — scheme of the peptide chain



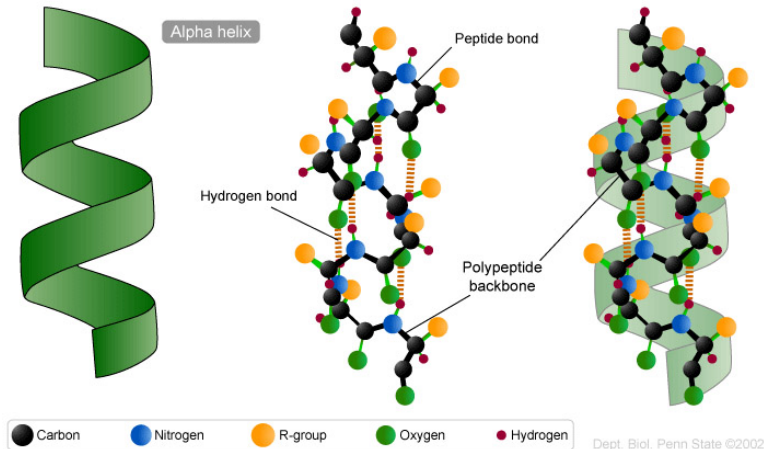
The same protein — the form which takes into account the sizes of the atoms



β -sheet — stairway like structure



α -helix



Dept. Biol. Penn State ©2002